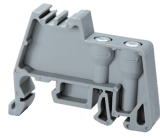


CA702



**connectwell**  
THE RIGHT CONNECTION

### End Clamp

End Clamps helps to secure the entire Terminal Block assembly on the Din Rail. End Clamps should be fixed on both sides of the Terminal Block assemblies.

#### PRODUCT SPECIFICATION

Length	44 mm
Width (Thickness)	9 mm

#### ORDERING INFORMATION

CAT. NO.	DESCRIPTION	STD. PACK
CA702	End Clamp in Polyamide 66 suitable for Din 32 / Din 35 / Din 35-15 Rails	50

#### NOTES

CA509/G1 marking tag can be used as an accessory.