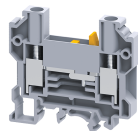


CDTTU



connectwell
THE RIGHT CONNECTION

10 sq.mm Disconnect & Test Terminal Blocks with Universal Mounting Possibility.

These Terminal Blocks are used for measuring, control and regulatory circuits. They Provide a clear functional advantage for devices having utility instruments and associated transformers. In this Terminal Block disconnection is achieved by means of a slide link operated by screwdriver. Specially designed socket headed screws act as test monitoring points in disconnecting & Test Terminal Block.

TECHNICAL DATA

Rated Voltage	800 V
Rated Current	57 A
Tightening Torque	1.2 Nm
Housing Material	Polymide
Product Function	Sliding Type Disconnect and Test
Wire Entry Orientation	Side Entry
Mounting Possibility	DIN 32/DIN 35/DIN 35-15 Rail
Screw Size	M4
Operated by	Screwdriver
Rated Surge Voltage	8 KV
Pollution Degree	3

CONNECTION DATA

Conductor Cross Section Stranded min.	1.5 mm ²
Conductor Cross Section Stranded max.	10 mm ²
Conductor Cross Section AWG/Kcmil min	16 AWG
Conductor Cross Section AWG/Kcmil max	8 AWG
Conductor Cross Section Stranded with Ferrule/Lug min	1.5 mm ²
Conductor Cross Section Stranded with Ferrule/Lug max	10 mm ²
2 Conductors with same Cross Section Stranded min	1.5 mm ²
2 Conductor with same Cross Section Stranded max	4 mm ²
Conductor Cross Section Solid min	1.5 mm ²
Conductor Cross Section Solid max	10 mm ²
2 Conductors with same Cross Section Stranded with TWIN Ferrule/Lug min	1.5 mm ²
2 Conductor with same Cross Section Stranded with TWIN Ferrule/Lug max	4 mm ²
Stripping Length	12 mm
Internal Cylindrical Guage	A5

DIMENSIONS

Height with DIN 32 rail	63.7 mm
Height with DIN 35 x 15 mm rail	65.7 mm
Height with DIN 35 x 7.5 mm rail	58.7 mm
Length	63 mm
Width (Thickness)	8 mm

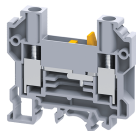
ORDERING INFORMATION

CAT. NO.	DESCRIPTION	STD. PACK
CDTTU	10 sq.mm Disconnect and Test Terminal Block in Grey colour.	50
CDTTUBU	10 sq.mm Disconnect and Test Terminal Block in Blue colour.	50

ACCESSORIES

IMAGES	CAT. NO.	DESCRIPTION	STD. PACK
	CA501-1M	Din 32 Rail unslotted 1 meter	50
	CA501-1M-S	Din 32 Rail slotted 1 meter	50
	CA501-2M	Din 32 Rail unslotted 2 meter	50
	CA501-2M-S	Din 32 Rail slotted 2 meter	50
	CA701-1M	Din 35 Rail unslotted 1 meter	50
	CA701-2M	Din 35 Rail unslotted 2 meter	50
	CA701-2M-S	Din 35 Rail slotted 2 meter	50
	CA701-1M-S	Din 35 Rail slotted 1 meter	50
	CA701-15-1M	Din 35 Rail 15 deep unslotted 1 meter	50
	CA701-15-1M-S	Din 35 Rail 15 deep slotted 1 meter	50
	CA701-15-2M	Din 35 Rail 15 deep unslotted 2 meter	50
	CA701-15-2M-S	Din 35 Rail 15 deep slotted 2 meter	50
	CA702	End Clamp in Polyamide 66 suitable for Din 32 / Din 35 / Din 35-15 Rails	50
	CA802	End Clamp in Polyamide suitable for Din 35 / Din 35-15 Rails	50
	EPCDTTU	End Plate in Grey colour suitable	50
	CA710/2	External Comb Type Shorting Link available in 2 Pole	100
	CA710/3	External Comb Type Shorting Link available in 3 Pole	50
	CA710/4	External Comb Type Shorting Link available in 4 Pole	50
	CA710/10	External Comb Type Shorting Link available in 10 Pole	20
	QJ8/2	2 Pole shorting Plug for CDS6U Terminal Block	25
	QJ8/4	4 Pole shorting Plug for CDS6U Terminal Block	25

CDTTU



connectwell
THE RIGHT CONNECTION

ACCESSORIES

IMAGES	CAT. NO.	DESCRIPTION	STD. PACK
	CA509/K8	Marking Tag with Vertical printing.	100
	SCS1/5.5	Electricians Screwdriver for slotted screws	10
	MC8	MARKER CARD 8MM PITCH WITH 48 TAGS	10

APPROVALS



NOTES

- 1) These disconnecting Terminal Blocks are not suitable for interrupting load. The supply must be switched off before operating the disconnecting Link.
- 2) The Rated current is with the use of copper (Cu) conductor/Wire

RATINGS AS PER STANDARDS

STANDARDS	UL 1059	CSA C.22.2 No:158	DIN EN60947-7-1
Approvals	UL	CSA	VDE
Conductor Cross Section Stranded min.	16 AWG	16 AWG	1.5 mm ²
Conductor Cross Section Stranded max.	8 AWG	8 AWG	10 mm ²
Rated Voltage	600 V	600 V	800 V
Rated Current	41 A	41 A	41 A
Tightening Torque	14 lb-in	14 lb-in	1.2 Nm
STANDARDS	IEC/EN60947-7-1		
Approvals	CE		
Conductor Cross Section Stranded min.	1.5 mm ²		
Conductor Cross Section Stranded max.	10 mm ²		
Rated Voltage	800 V		
Rated Current	57 A		
Tightening Torque	1.2 Nm		