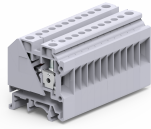


# CMDB12



10 sq.mm Modular Distribution Blocks.

CMDB blocks are a modified version of the CDB terminal blocks without the central incoming terminal connection.

### TECHNICAL DATA

Rated Voltage	1000 V
Rated Current - Input Side	57 A
Rated Current - Output Side	32 A
Tightening Torque - Input Side	1.2 Nm
Tightening Torque - Output Side	0.5 Nm
Housing Material	Polymide
Standard Colour	Grey
Product Function	Modular Distribution Blocks
Wire Entry Orientation	Side Entry
Mounting Possibility	DIN 32/DIN 35/DIN 35-15 Rail
Screw Size	M4 for 10sqmm, M3 for 4sqmm
Operated by	Screwdriver
Rated Surge Voltage	8 KV
Pollution Degree	3

### CONNECTION DATA

Conductor Cross Section Stranded min.- Input Side	0.5 mm <sup>2</sup>
Conductor Cross Section Stranded max. - Input Side	10 mm <sup>2</sup>
Conductor Cross Section Stranded min.- Output Side	0.2 mm <sup>2</sup>
Conductor Cross Section Stranded max.- Output Side	4 mm <sup>2</sup>
Conductor Cross Section Stranded min AWG/KCML.- Input Side	16 AWG
Conductor Cross Section Stranded max AWG/KCML.- Input Side	6 AWG
Stripping Length- Input Side	12 mm
Stripping Length-Output Side	9 mm
2 Conductors with same Cross Section Stranded with TWIN Ferrule/Lug min - Input Side	0.5 mm <sup>2</sup>
	6 mm <sup>2</sup>
Internal Cylindrical Gauge	A6, A4

### DIMENSIONS

Height with DIN 32 rail	52.75 mm
Height with DIN 35 x 15 mm rail	55.35 mm
Height with DIN 35 x 7.5 mm rail	47.85 mm
Length	80.9 mm
Width (Thickness)	42.5 mm

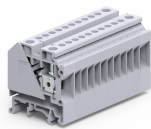
### ORDERING INFORMATION

CAT. NO.	DESCRIPTION	STD. PACK
CMDB12	10 sq.mm Modular Distribution Terminal Block with 4x10sqmm, 20x4sqmm connection points in Grey Colour	5

### ACCESSORIES

IMAGES	CAT. NO.	DESCRIPTION	STD. PACK
	CA501-1M	Din 32 Rail unslotted 1 meter	50
	CA501-1M-S	Din 32 Rail slotted 1 meter	50
	CA501-2M	Din 32 Rail unslotted 2 meter	50
	CA501-2M-S	Din 32 Rail slotted 2 meter	50
	CA701-1M	Din 35 Rail unslotted 1 meter	50
	CA701-2M	Din 35 Rail unslotted 2 meter	50
	CA701-2M-S	Din 35 Rail slotted 2 meter	50
	CA701-1M-S	Din 35 Rail slotted 1 meter	50
	CA701-15-1M	Din 35 Rail 15 deep unslotted 1 meter	50
	CA701-15-1M-S	Din 35 Rail 15 deep slotted 1 meter	50
	CA701-15-2M	Din 35 Rail 15 deep unslotted 2 meter	50
	CA701-15-2M-S	Din 35 Rail 15 deep slotted 2 meter	50
	CA702	End Clamp in Polyamide 66 suitable for Din 32 / Din 35 / Din 35-15 Rails	50
	CA802	End Clamp in Polyamide suitable for Din 35 / Din 35-15 Rails	50
	CA509/K10	Marking Tag Blank suitable for CTS10U / CGT10U / CGT10N / CHV10U / CTS10USC / STH4 / STH4DT / STH4DTSH / CSC10T Terminal Blocks	100
	SCS0.8/4	Electricians Screwdriver for slotted screws	10
	CA509/K6	Blank Marking Tag	100
	SCS0.5/3	Electricians Screwdriver for slotted screws	10
	MC10	MARKER CARD 10MM PITCH WITH 42 TAGS	10
	MC6	MARKER CARD 6MM PITCH WITH 72 TAGS	10

CMDB12



**connectwell**  
THE RIGHT CONNECTION

**NOTES**

1) These Terminal Blocks are also available in Red, Yellow, Blue, Black & Green colour.

The product image is only for representation purposes only.

2) The Rated current is with the use of copper (Cu) conductor/Wire

**RATINGS AS PER STANDARDS**

<b>STANDARDS</b>	<b>IEC/EN60947-7-1</b>
Conductor Cross Section Stranded min.- Input Side	1.5 mm <sup>2</sup>
Conductor Cross Section Stranded max. - Input Side	10 mm <sup>2</sup>
Conductor Cross Section Stranded min.- Output Side	0.2 mm <sup>2</sup>
Conductor Cross Section Stranded max.- Output Side	4 mm <sup>2</sup>
Rated Voltage	1000 V
Rated Current - Input Side	57 A
Rated Current - Output Side	32 A
Tightening Torque - Input Side	1.2 Nm
Tightening Torque - Output Side	0.5 Nm