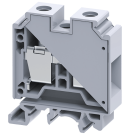


CR35



connectwell
THE RIGHT CONNECTION

35 sq.mm Feed Through Radiation Resistant Terminal Blocks

35 sq.mm Feed Through Terminal Blocks are the most Versatile terminals for control, Automation, Instrumentation and Power Distribution applications. A specially designed flexible foot enable easy mounting and dismounting from the Din rail with the help of screw driver. These Terminal Blocks have marker holding recesses to accept marking tags for circuit identification. Cross connection can be achieved with the aid of shorting links / sleeves & screws.

TECHNICAL DATA

Rated Voltage	630 V
Rated Current	125 A
Tightening Torque	2.5 Nm
Material Group	PAEK
Standard Colour	Beige
Product Function	Feed Through
Wire Entry Orientation	Side Entry
Mounting Possibility	DIN 32/DIN 35/DIN 35-15 Rail
Screw Size	M6
Operated by	Screwdriver
Rated Surge Voltage	8 KV
Pollution Degree	3

CONNECTION DATA

Conductor Cross Section Stranded min.	10 mm ²
Conductor Cross Section Stranded max.	35 mm ²
Conductor Cross Section AWG/Kcmil min	16 AWG
Conductor Cross Section AWG/Kcmil max	1/0 AWG
Conductor Cross Section Stranded with Ferrule/Lug min	10 mm ²
Conductor Cross Section Stranded with Ferrule/Lug max	35 mm ²
Stripping Length	15 mm
Internal Cylindrical Gauge	A9

DIMENSIONS

Height	58 mm
Length	50.5 mm
Width (Thickness)	16 mm

ORDERING INFORMATION

CAT. NO.	DESCRIPTION	STD. PACK
CR35	35 sq.mm Feed Through Radiation Resistant Terminal Blocks	50

ACCESSORIES

IMAGES	CAT. NO.	DESCRIPTION	STD. PACK
	CA501-1M	Din 32 Rail unslotted 1 meter	50
	CA501-1M-S	Din 32 Rail slotted 1 meter	50
	CA501-2M	Din 32 Rail unslotted 2 meter	50

ACCESSORIES

IMAGES	CAT. NO.	DESCRIPTION	STD. PACK
	CA501-2M-S	Din 32 Rail slotted 2 meter	50
	CA701-1M	Din 35 Rail unslotted 1 meter	50
	CA701-2M	Din 35 Rail unslotted 2 meter	50
	CA701-2M-S	Din 35 Rail slotted 2 meter	50
	CA701-1M-S	Din 35 Rail slotted 1 meter	50
	CA701-15-1M	Din 35 Rail 15 deep unslotted 1 meter	50
	CA701-15-1M-S	Din 35 Rail 15 deep slotted 1 meter	50
	CA701-15-2M	Din 35 Rail 15 deep unslotted 2 meter	50
	CA701-15-2M-S	Din 35 Rail 15 deep slotted 2 meter	50
	CR702	End Clamp in Peak Material suitable for Din 32 / Din 35 / Din 35-15 Rails	50
	CA509/K16	Marking Tag Blank suitable for CTS35UNA / CGT35U Terminal Blocks	100
	SCS1/5.5	Electricians Screwdriver for slotted screws	10
	MC16	MARKER CARD 16MM PITCH WITH 24 TAGS	10

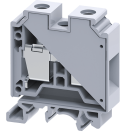
APPROVALS



NOTES

- 1) The photo shown is for representation purposes only.
- 2) The Rated current is with the use of copper (Cu) conductor/Wire

CR35



connectwell
THE RIGHT CONNECTION

RATINGS AS PER STANDARDS

STANDARDS	IEC/EN60947-7-1		
Approvals	CE		
Conductor Cross Section Stranded min.	10 mm ²		
Conductor Cross Section Stranded max.	35 mm ²		
Rated Voltage	630 V		
Rated Current	125 A		
Tightening Torque	2.5 Nm		