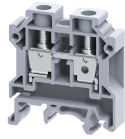


CTS10U EX



connectwell
THE RIGHT CONNECTION

10 sq. mm Feed Through Terminal Blocks

10 sq.mm Feed Through Terminal Blocks are the most Versatile terminals for control, Automation, Instrumentation and Power Distribution applications. A specially designed flexible foot enable easy mounting and dismounting from the Din rail with the help of screw driver. These Terminal Blocks have marker holding recesses to accept marking tags for circuit identification. Cross connection can be achieved with the aid of shorting links / sleeves & screws.

TECHNICAL DATA

Rated Voltage	600 V
Rated Current	50 A
Tightening Torque	1.2 Nm
Housing Material	Polymide
Standard Colour	Grey
Product Function	Feed Through
Wire Entry Orientation	Side Entry
Mounting Possibility	DIN 32/DIN 35/DIN 35-15 Rail
Screw Size	M4
Operated by	Screwdriver
Rated Surge Voltage	8 KV
Pollution Degree	3

CONNECTION DATA

Conductor Cross Section Stranded min.	0.5 mm ²
Conductor Cross Section Stranded max.	10 mm ²
Conductor Cross Section AWG/Kcmil min	16 AWG
Conductor Cross Section AWG/Kcmil max	6 AWG
Conductor Cross Section Stranded with Ferrule/Lug min	0.5 mm ²
Conductor Cross Section Stranded with Ferrule/Lug max	10 mm ²
2 Conductors with same Cross Section Stranded min	0.5 mm ²
2 Conductor with same Cross Section Stranded max	6 mm ²
Conductor Cross Section Solid min	0.5 mm ²
Conductor Cross Section Solid max	16 mm ²
2 Conductors with same Cross Section Stranded with TWIN Ferrule/Lug min	0.5 mm ²
2 Conductor with same Cross Section Stranded with TWIN Ferrule/Lug max	6 mm ²
Stripping Length	12 mm
Internal Cylindrical Gauge	A6

DIMENSIONS

Height with DIN 32 rail	52.8 mm
Height with DIN 35 x 15 mm rail	55.5 mm
Height with DIN 35 x 7.5 mm rail	47.8 mm
Length	43 mm
Width (Thickness)	10 mm

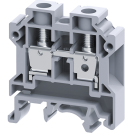
ORDERING INFORMATION

CAT. NO.	DESCRIPTION	STD. PACK
CTS10U EX	10 sq.mm Feed Through Terminal Block in Grey colour	100

ACCESSORIES

IMAGES	CAT. NO.	DESCRIPTION	STD. PACK
	CA501-1M	Din 32 Rail unslotted 1 meter	50
	CA501-1M-S	Din 32 Rail slotted 1 meter	50
	CA501-2M	Din 32 Rail unslotted 2 meter	50
	CA501-2M-S	Din 32 Rail slotted 2 meter	50
	CA701-1M	Din 35 Rail unslotted 1 meter	50
	CA701-2M	Din 35 Rail unslotted 2 meter	50
	CA701-2M-S	Din 35 Rail slotted 2 meter	50
	CA701-1M-S	Din 35 Rail slotted 1 meter	50
	CA701-15-1M	Din 35 Rail 15 deep unslotted 1 meter	50
	CA701-15-1M-S	Din 35 Rail 15 deep slotted 1 meter	50
	CA701-15-2M	Din 35 Rail 15 deep unslotted 2 meter	50
	CA701-15-2M-S	Din 35 Rail 15 deep slotted 2 meter	50
	CA702	End Clamp in Polyamide 66 suitable for Din 32 / Din 35 / Din 35-15 Rails	50
	CA802	End Clamp in Polyamide suitable for Din 35 / Din 35-15 Rails	50
	EP6/10U	End Plate in Grey colour	50
	EP6/10UBU	End Plate in Blue colour	50
	EP6/10UY	End Plate in Yellow colour	50
	PP6/10U	Partition Plate in Grey colour suitable for CTS6U / CTS10U Terminal Block	50
	SP6/10U	Separator Plate in Grey colour	100

CTS10U EX



connectwell
THE RIGHT CONNECTION

ACCESSORIES

IMAGES	CAT. NO.	DESCRIPTION	STD. PACK
	CA724/2	Pre Assembled Shorting Link assemblies with 2 poles	100
	CA724/3	Pre Assembled Shorting Links assemblies with 3 poles	50
	CA724/4	Pre assembled Shorting Link assemblies with 4 poles	50
	CA724/10	Pre Assembled Shorting Links assemblies with 10 poles	100
	CA724/9	Pre Assembled Shorting Links assemblies with 9 poles	100
	CA744/2	Insulated Pre assembled Shorting Link for 2 way shorting	100
	CA744/3	Insulated Pre assembled Shorting Link for 3 way shorting	50
	CA744/4	Insulated Pre assembled Shorting Link for 4 way shorting	50
	CA744/10	Insulated Pre assembled Shorting Link for 10 way shorting	10
	CA718/2	External Comb Type Shorting Link available in 2 Pole	100
	CA718/3	External Comb Type Shorting Link available in 3 Pole	50
	CA718/4	External Comb Type Shorting Link available in 4 Pole	50
	CA718/10	External Comb Type Shorting Link available in 10 Pole	20
	CA703/3	Permanent Shorting Link for 2 way shorting	100
	CA704/3	Permanent Shorting Link for 3 way shorting	100
	CA705/3	Permanent Shorting Link for 4 way shorting	100
	CA734/10	Permanent Shorting Link for 10 way shorting	100
	CA707/S/Q/1	Shorting Sleeve and Screw	100
	CA706/3	Removable Shorting link suitable for CTS10U	100
	CA707/L/Q/1	Long Sleeves & Screws	100
	CA509/K10	Marking Tag Blank suitable for CTS10U / CGT10U / CGT10N / CHV10U / CTS10USC / STH4 / STH4DT / STH4DTSH / CSC10T Terminal Blocks	100
	CA707/TS/05	Test Socket suitable for CTS6U / CTS10U Terminal Blocks	100
	SCS0.8/4	Electricians Screwdriver for slotted screws	10

ACCESSORIES

IMAGES	CAT. NO.	DESCRIPTION	STD. PACK
	MC10	MARKER CARD 10MM PITCH WITH 42 TAGS	10

APPROVALS



NOTES

The Rated current is with the use of copper (Cu) conductor/Wire