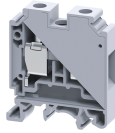


# CTS25UN



## 25 sq.mm Standard Feed Through Terminal Blocks

25 sq.mm Feed Through Terminal Blocks are the most Versatile terminals for control, Automation, Instrumentation and Power Distribution applications. A specially designed flexible foot enable easy mounting and dismounting from the Din rail with the help of screw driver. These Terminal Blocks have marker holding recesses to accept marking tags for circuit identification. Cross connection can be achieved with the aid of shorting links / sleeves & screws.

### TECHNICAL DATA

Rated Current	1000 A
Rated Current - Input Side	101 A
Tightening Torque	2 Nm
Housing Material	Polymide
Product Function	Feed Through
Wire Entry Orientation	Side Entry
Mounting Possibility	DIN 32/DIN 35/DIN 35-15 Rail
Screw Size	M5
Operated by	Screwdriver
Rated Surge Voltage	8 KV
Pollution Degree	3

### CONNECTION DATA

Conductor Cross Section Stranded min.	4 mm <sup>2</sup>
Conductor Cross Section Stranded max.	25 mm <sup>2</sup>
Conductor Cross Section AWG/Kcmil min	12 AWG
Conductor Cross Section AWG/Kcmil max	4 AWG
Conductor Cross Section Stranded with Ferrule/Lug min	4 mm <sup>2</sup>
Conductor Cross Section Stranded with Ferrule/Lug max	25 mm <sup>2</sup>
2 Conductors with same Cross Section Stranded min	4 mm <sup>2</sup>
2 Conductor with same Cross Section Stranded max	16 mm <sup>2</sup>
2 Conductors with same Cross Section Stranded with TWIN Ferrule/Lug min	4 mm <sup>2</sup>
2 Conductor with same Cross Section Stranded with TWIN Ferrule/Lug max	10 mm <sup>2</sup>
Stripping Length	14 mm
Internal Cylindrical Guage	A8

### DIMENSIONS

Height with DIN 32 rail	62.3 mm
Height with DIN 35 x 15 mm rail	64.7 mm
Height with DIN 35 x 7.5 mm rail	57.2 mm
Length	49 mm
Width (Thickness)	12 mm

### ORDERING INFORMATION

CAT. NO.	DESCRIPTION	STD. PACK
CTS25UN	25 sq.mm Feed Through Terminal Block in Grey	50

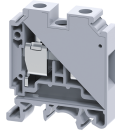
### ORDERING INFORMATION

CAT. NO.	DESCRIPTION	STD. PACK
	colour	
CTS25UNBK	25 sq.mm Feed Through Terminal Block in Black colour	50
CTS25UNBU	25 sq.mm Feed Through Terminal Block in Blue colour	50
CTS25UNGN	25 sq.mm Feed Through Terminal Block in Green colour	50
CTS25UNR	25 sq.mm Feed Through Terminal Block in Red colour	50
CTS25UNY	25 sq.mm Feed Through Terminal Block in Yellow colour	50

### ACCESSORIES

IMAGES	CAT. NO.	DESCRIPTION	STD. PACK
	CA501-1M	Din 32 Rail unslotted 1 meter	50
	CA501-1M-S	Din 32 Rail slotted 1 meter	50
	CA501-2M	Din 32 Rail unslotted 2 meter	50
	CA501-2M-S	Din 32 Rail slotted 2 meter	50
	CA701-1M	Din 35 Rail unslotted 1 meter	50
	CA701-2M	Din 35 Rail unslotted 2 meter	50
	CA701-2M-S	Din 35 Rail slotted 2 meter	50
	CA701-1M-S	Din 35 Rail slotted 1 meter	50
	CA701-15-1M	Din 35 Rail 15 deep unslotted 1 meter	50
	CA701-15-1M-S	Din 35 Rail 15 deep slotted 1 meter	50
	CA701-15-2M	Din 35 Rail 15 deep unslotted 2 meter	50
	CA701-15-2M-S	Din 35 Rail 15 deep slotted 2 meter	50
	CA702	End Clamp in Polyamide 66 suitable for Din 32 / Din 35 / Din 35-15 Rails	50
	CA802	End Clamp in Polyamide suitable for Din 35 / Din 35-15 Rails	50
	PP25UN	Partition Plate in Grey colour suitable for CTS25UN Terminal Block	50

CTS25UN



**connectwell**  
THE RIGHT CONNECTION

**ACCESSORIES**

IMAGES	CAT. NO.	DESCRIPTION	STD. PACK
	CA725/2	Pre assembled Shorting Link for 2 way shorting	50
	CA725/3	Pre assembled Shorting Link for 3 way shorting	20
	CA725/4	Pre assembled Shorting Link for 4 way shorting	20
	CA725/10	Pre assembled Shorting Link for 10 way shorting	10
	CA745/2	Insulated Pre assembled Shorting Link for 2 way shorting	50
	CA745/3	Insulated Pre assembled Shorting Link for 3 way shorting	20
	CA745/4	Insulated Pre assembled Shorting Link for 4 way shorting	20
	CA745/10	Insulated Pre assembled Shorting Link for 10 way shorting	10
	CA703/4	Permanent Shorting Link for 2 way shorting	100
	CA704/4	Permanent Shorting Link for 3 way shorting	100
	CA705/4	Permanent Shorting Link for 4 way shorting	100
	CA705/4	Permanent Shorting Link for 4 way shorting	100
	CA707/S/Q/2	Shorting Sleeve and Screw suitable for CTS25UN / CTS35UN / CTS35UNA Terminal Blocks.	100
	CA509/K12	Marking Tag Blank suitable for CTS16U / CTS25UN / CGT16N / CDB25 / CMDB25 / CSC16T / CSCG16T / CY16 / CYG16 Terminal Blocks	100
	CA707/TS/06	Test Socket Suitable for CTS25UN / CTS35UN / CTS35UNA Terminal Blocks	100
	SCS1/5.5	Electricians Screwdriver for slotted screws	10
	MC12	MARKER CARD 12MM PITCH WITH 36 TAGS	10

**APPROVALS**



**NOTES**

The Rated current is with the use of copper (Cu) conductor/Wire

**RATINGS AS PER STANDARDS**

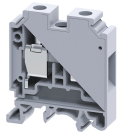
STANDARDS

UL 1059

IEC/EN60947-7-1

CSA C.22.2 No:158

CTS25UN



**connectwell**  
THE RIGHT CONNECTION

**RATINGS AS PER STANDARDS**

	UL	CE	CSA
Approvals	UL	CE	CSA
Conductor Cross Section Stranded min.	14 AWG	4 mm <sup>2</sup>	12 AWG
Conductor Cross Section Stranded max.	2 AWG	25 mm <sup>2</sup>	4 AWG
Rated Voltage	600 V	1000 V	600 V
Rated Current	105 A	101 A	85 A
Tightening Torque	30 lb-in	2 Nm	18 lb-in

**STANDARDS**

**EN60079-7**

**EN60079-7**

	EN60079-7	EN60079-7	
Approvals	ATEX-IECex	ATEX	
Conductor Cross Section Stranded min.	6 mm <sup>2</sup>	6 mm <sup>2</sup>	
Conductor Cross Section Stranded max.	25 mm <sup>2</sup>	25 mm <sup>2</sup>	
Rated Voltage	690 V	690 V	
Rated Current	88 A	88 A	
Tightening Torque	2 Nm	2 Nm	
Operating Temperature Range		-40 to +85 °C	