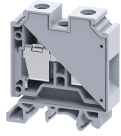


CTS35UN



35 sq.mm Feed Through Terminal Blocks with Slotted Screws

35 sq.mm Feed Through Terminal Blocks are the most Versatile terminals for control, Automation, Instrumentation and Power Distribution applications. A specially designed flexible foot enable easy mounting and dismounting from the Din rail with the help of screw driver. These Terminal Blocks have marker holding recesses to accept marking tags for circuit identification. Cross connection can be achieved with the aid of shorting links / sleeves & screws.

TECHNICAL DATA

Rated Voltage	1000 V
Rated Current	125 A
Tightening Torque	2.5 Nm
Housing Material	Polymide
Product Function	Feed Through
Wire Entry Orientation	Side Entry
Mounting Possibility	DIN 32/DIN 35/DIN 35-15 Rail
Screw Size	M6
Operated by	Screwdriver
Rated Surge Voltage	8 KV
Pollution Degree	3

CONNECTION DATA

Conductor Cross Section Stranded min.	4 mm ²
Conductor Cross Section Stranded max.	35 mm ²
Conductor Cross Section AWG/Kcmil min	12 AWG
Conductor Cross Section AWG/Kcmil max	1/0 AWG
Conductor Cross Section Stranded with Ferrule/Lug min	4 mm ²
Conductor Cross Section Stranded with Ferrule/Lug max	35 mm ²
2 Conductors with same Cross Section Stranded min	4 mm ²
2 Conductor with same Cross Section Stranded max	16 mm ²
2 Conductors with same Cross Section Stranded with TWIN Ferrule/Lug min	4 mm ²
2 Conductor with same Cross Section Stranded with TWIN Ferrule/Lug max	16 mm ²
Stripping Length	15 mm
Internal Cylindrical Guage	A9

DIMENSIONS

Height with DIN 32 rail	64.3 mm
Height with DIN 35 x 15 mm rail	66.7 mm
Height with DIN 35 x 7.5 mm rail	59.2 mm
Length	50.5 mm
Width (Thickness)	16 mm

ORDERING INFORMATION

CAT. NO.	DESCRIPTION	STD. PACK
CTS35UN	35 sq.mm Feed Through Terminal Block in Grey	50

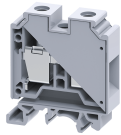
ORDERING INFORMATION

CAT. NO.	DESCRIPTION	STD. PACK
	colour	
CTS35UNR	35 sq.mm Feed Through Terminal Block in Red colour	50
CTS35UNY	35 sq.mm Feed Through Terminal Block in Yellow colour	50
CTS35UNBU	35 sq.mm Feed Through Terminal Block in Blue colour	50
CTS35UNBK	35 sq.mm Feed Through Terminal Block in Black colour	50
CTS35UNGN	35 sq.mm Feed Through Terminal Block in Green colour	50

ACCESSORIES

IMAGES	CAT. NO.	DESCRIPTION	STD. PACK
	CA501-1M	Din 32 Rail unslotted 1 meter	50
	CA501-1M-S	Din 32 Rail slotted 1 meter	50
	CA501-2M	Din 32 Rail unslotted 2 meter	50
	CA501-2M-S	Din 32 Rail slotted 2 meter	50
	CA701-1M	Din 35 Rail unslotted 1 meter	50
	CA701-2M	Din 35 Rail unslotted 2 meter	50
	CA701-2M-S	Din 35 Rail slotted 2 meter	50
	CA701-1M-S	Din 35 Rail slotted 1 meter	50
	CA701-15-1M	Din 35 Rail 15 deep unslotted 1 meter	50
	CA701-15-1M-S	Din 35 Rail 15 deep slotted 1 meter	50
	CA701-15-2M	Din 35 Rail 15 deep unslotted 2 meter	50
	CA701-15-2M-S	Din 35 Rail 15 deep slotted 2 meter	50
	CA702	End Clamp in Polyamide 66 suitable for Din 32 / Din 35 / Din 35-15 Rails	50
	CA802	End Clamp in Polyamide suitable for Din 35 / Din 35-15 Rails	50
	PP35UN	Partition Plate in Grey colour suitable for CTS35UN Terminal Block	50

CTS35UN



connectwell
THE RIGHT CONNECTION

ACCESSORIES

IMAGES	CAT. NO.	DESCRIPTION	STD. PACK
	CA771/2	Pre assembled Shorting Link for 2 way shorting	50
	CA771/3	Pre assembled Shorting Link for 3 way shorting	20
	CA771/4	Pre assembled Shorting Link for 4 way shorting	20
	CA771/10	Pre assembled Shorting Link for 10 way shorting	10
	CA781/2	Insulated Pre assembled Shorting Link for 2 way shorting	50
	CA781/3	Insulated Pre assembled Shorting Link for 3 way shorting	20
	CA781/4	Insulated Pre assembled Shorting Link for 4 way shorting	20
	CA781/10	Insulated Pre assembled Shorting Link for 10 way shorting	10
	CA703/10	Permanent Shorting Links for 2 way shorting	100
	CA704/10	Permanent Shorting Links for 3 way shorting	100
	CA705/10	Permanent Shorting Links for 4 way shorting	100
	CA770/10	Permanent Shorting Links for 10 way shorting	100
	CA707/S/Q/2	Shorting Sleeve and Screw suitable for CTS25UN / CTS35UN / CTS35UNA Terminal Blocks.	100
	CA509/K16	Marking Tag Blank suitable for CTS35UNA / CGT35U Terminal Blocks	100
	CA707/TS/06	Test Socket Suitable for CTS25UN / CTS35UN / CTS35UNA Terminal Blocks	100
	SCS1/5.5	Electricians Screwdriver for slotted screws	10
	MC16	MARKER CARD 16MM PITCH WITH 24 TAGS	10

APPROVALS



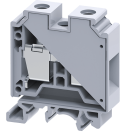
NOTES

The Rated current is with the use of copper (Cu) conductor/Wire

RATINGS AS PER STANDARDS

STANDARDS	UL 1059	CSA C.22.2 No:158	IEC/EN60947-7-1
Approvals	UL	CSA	CE

CTS35UN



connectwell
THE RIGHT CONNECTION

RATINGS AS PER STANDARDS

Conductor Cross Section Stranded min.	12 AWG	12 AWG	4 mm ²
Conductor Cross Section Stranded max.	1/0 AWG	1/0 AWG	35 mm ²
Rated Voltage	600 V	600 V	1000 V
Rated Current	150 A	150 A	125 A
Tightening Torque	50 lb-in	50 lb-in	2.5 Nm

STANDARDS

EN60079-7

EN60079-7

Approvals	ATEX	ATEX-IECex	
Conductor Cross Section Stranded min.	10 mm ²	10 mm ²	
Conductor Cross Section Stranded max.	35 mm ²	35 mm ²	
Rated Voltage	800 V	800 V	
Rated Current	109 A	109 A	
Tightening Torque	2.5 Nm	2.5 Nm	
Operating Temperature Range	-60 to +110 °C		