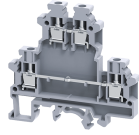


ODL4UHV



4 sq.mm Offset Double Level Terminal Blocks.

ODL4U series Terminal Block , the top level is offset from the bottom level by half the thickness of the terminal block. this creates better access for the bottom level screw while the wires are connected. It is recommended to use End Plates at both ends of the assembled ODL4U sets for flat alignment to enable the effective use of end clamp. These are ideal for use in applications requiring high density wiring. Interconnection/shorting is possible at both levels. ODL4UHV is specially designed for high voltage application.

TECHNICAL DATA

Rated Voltage	1000 V
Rated Current	32 A
Tightening Torque	0.5 Nm
Housing Material	Polymide
Standard Colour	Grey
Product Function	Double Level
Wire Entry Orientation	Side Entry
Mounting Possibility	DIN 32/DIN 35/DIN 35-15 Rail
Screw Size	M3
Operated by	Screwdriver
Rated Surge Voltage	6 KV
Pollution Degree	3

CONNECTION DATA

Conductor Cross Section Stranded min.	0.2 mm ²
Conductor Cross Section Stranded max.	4.0 mm ²
Conductor Cross Section AWG/Kcmil min	22 AWG
Conductor Cross Section AWG/Kcmil max	10 AWG
Conductor Cross Section Stranded with Ferrule/Lug min	0.2 mm ²
Conductor Cross Section Stranded with Ferrule/Lug max	4 mm ²
2 Conductors with same Cross Section Stranded min	0.2 mm ²
2 Conductor with same Cross Section Stranded max	2.5 mm ²
Conductor Cross Section Solid min	0.2 mm ²
Conductor Cross Section Solid max	6 mm ²
2 Conductors with same Cross Section Stranded with TWIN Ferrule/Lug min	0.2 mm ²
2 Conductor with same Cross Section Stranded with TWIN Ferrule/Lug max	2.5 mm ²
Stripping Length	8 mm
Internal Cylindrical Gauge	A4

DIMENSIONS

Height with DIN 32 rail	70.7 mm
Height with DIN 35 x 15 mm rail	73.2 mm
Height with DIN 35 x 7.5 mm rail	66.5 mm
Length	68 mm
Width (Thickness)	6 mm

ORDERING INFORMATION

CAT. NO.	DESCRIPTION	STD. PACK
ODL4UHV	4 sq.mm 2 Level Offset Terminal Block in Grey colour	50

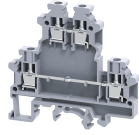
APPROVALS



NOTES

The Rated current is with the use of copper (Cu) conductor/Wire

ODL4UHV



connectwell
THE RIGHT CONNECTION

RATINGS AS PER STANDARDS

STANDARDS	UL 1059	CSA C.22.2 No:158	IEC/EN60947-7-1
Approvals	UL	CSA	CE
Conductor Cross Section Stranded min.	22 AWG	22 AWG	0.2 mm ²
Conductor Cross Section Stranded max.	10 AWG	10 AWG	4 mm ²
Rated Voltage	600 V	600 V	1000 V
Rated Current	35 A	35 A	32 A
Tightening Torque	7 lb-in	7 lb-in	0.5 Nm