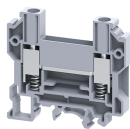


CDTTUFTSC



10 sq.mm Spring Loaded Feed Through Terminal Blocks

These Terminal Block are preferred for connections that involves safety requirements of the electric supply industry (ESI) standards, in addition to the high torque screws,

TECHNICAL DATA

Rated Voltage	800 V
Rated Current	57 A
Tightening Torque	1.2 Nm
Housing Material	Polymide
Product Function	Feed Through
Wire Entry Orientation	Side Entry
Mounting Possibility	DIN 32/DIN 35/DIN 35-15 Rail
Operated by	Screw Driver
Rated Surge Voltage	8 KV
Pollution Degree	3

CONNECTION DATA

Conductor Cross Section Stranded min.	1.5 mm ²
Conductor Cross Section Stranded max.	10 mm ²
Conductor Cross Section AWG/Kcmil min	16 AWG
Conductor Cross Section AWG/Kcmil max	8 AWG
Conductor Cross Section Stranded with Ferrule/Lug min	1.5 mm ²
Conductor Cross Section Stranded with Ferrule/Lug max	10 mm ²
2 Conductors with same Cross Section Stranded min	1.5 mm ²
2 Conductor with same Cross Section Stranded max	4 mm ²
Conductor Cross Section Solid min	1.5 mm ²
Conductor Cross Section Solid max	10 mm ²
2 Conductors with same Cross Section Stranded with TWIN Ferrule/Lug min	1.5 mm ²
2 Conductor with same Cross Section Stranded with TWIN Ferrule/Lug max	4 mm ²
Stripping Length	12 mm

DIMENSIONS

Height with DIN 32 rail	63.7 mm
Height with DIN 35 x 15 mm rail	65.7 mm
Height with DIN 35 x 7.5 mm rail	58.7 mm
Length	63 mm
Width (Thickness)	8 mm

ORDERING INFORMATION

CAT. NO.	DESCRIPTION	STD. PACK
CDTTUFTSC	10 sq.mm Spring loaded Terminal Block in Grey colour	50

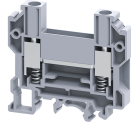
ORDERING INFORMATION

CAT. NO.	DESCRIPTION	STD. PACK
CDTTUFTSCBU	10 sq.mm Spring loaded Terminal Block in Blue colour	50

ACCESSORIES

IMAGES	CAT. NO.	DESCRIPTION	STD. PACK
	CA501-1M	Din 32 Rail unslotted 1 meter	50
	CA501-1M-S	Din 32 Rail slotted 1 meter	50
	CA501-2M	Din 32 Rail unslotted 2 meter	50
	CA501-2M-S	Din 32 Rail slotted 2 meter	50
	CA701-1M	Din 35 Rail unslotted 1 meter	50
	CA701-2M	Din 35 Rail unslotted 2 meter	50
	CA701-2M-S	Din 35 Rail slotted 2 meter	50
	CA701-1M-S	Din 35 Rail slotted 1 meter	50
	CA701-15-1M	Din 35 Rail 15 deep unslotted 1 meter	50
	CA701-15-1M-S	Din 35 Rail 15 deep slotted 1 meter	50
	CA701-15-2M	Din 35 Rail 15 deep unslotted 2 meter	50
	CA701-15-2M-S	Din 35 Rail 15 deep slotted 2 meter	50
	CA702	End Clamp in Polyamide 66 suitable for Din 32 / Din 35 / Din 35-15 Rails	50
	CA802	End Clamp in Polyamide suitable for Din 35 / Din 35-15 Rails	50
	EPCDTTU	End Plate in Grey colour suitable	50
	CA710/2	External Comb Type Shorting Link available in 2 Pole	100
	CA710/3	External Comb Type Shorting Link available in 3 Pole	50
	CA710/4	External Comb Type Shorting Link available in 4 Pole	50
	CA710/10	External Comb Type Shorting Link available in 10 Pole	20
	CA509/K8	Marking Tag with Vertical printing.	100
	SCS1/5.5I	Insulated Electricians Screwdriver for slotted screws	10

CDTTUFTSC



connectwell
THE RIGHT CONNECTION

ACCESSORIES

IMAGES	CAT. NO.	DESCRIPTION	STD. PACK
	CA202	End Clamp in Polyamide suitable for Din 35 / Din 35-15 Rails	25
	MC8	MARKER CARD 8MM PITCH WITH 48 TAGS	10

APPROVALS



NOTES

The Rated current is with the use of copper (Cu) conductor/Wire

RATINGS AS PER STANDARDS

STANDARDS	UL 1059	CSA C.22.2 No:158	IEC/EN60947-7-1
Approvals	UL	CSA	CE
Conductor Cross Section Stranded min.	16 AWG	16 AWG	1.5 mm ²
Conductor Cross Section Stranded max.	8 AWG	8 AWG	10 mm ²
Rated Voltage	600 V	600 V	800 V
Rated Current	41 A	41 A	57 A
Tightening Torque	14 lb-in	14 lb-in	1.2 Nm