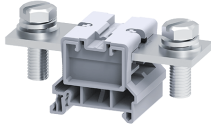


# CBB150LS



**connectwell**  
THE RIGHT CONNECTION

## 150 sq.mm Stud Type Power Terminal Blocks

CBB series Terminal Blocks are preferred for application using wires of large cross section. The Wire is crimped to a ring / fork lug and is screwed on to the flat current bar of the Terminal Block.

### TECHNICAL DATA

Rated Voltage	1000 V
Rated Current	309 A
Tightening Torque	14 Nm
Housing Material	Polymide
Product Function	Feed Through
Wire Entry Orientation	Side Entry
Mounting Possibility	DIN 35/DIN 35-15 Rail
Operated by	Screw Driver / Nut Driver
Rated Surge Voltage	8 KV
Pollution Degree	3

### CONNECTION DATA

Conductor Cross Section Stranded min.	16 mm <sup>2</sup>
Conductor Cross Section Stranded max.	150 mm <sup>2</sup>
Conductor Cross Section AWG/Kcmil min	8 AWG
Conductor Cross Section AWG/Kcmil max	300 kcmil
Conductor Cross Section Stranded with Ferrule/Lug min	16 mm <sup>2</sup>
Conductor Cross Section Stranded with Ferrule/Lug max	150 mm <sup>2</sup>

### DIMENSIONS

Height with DIN 35 x 15 mm rail	54.5 mm
Height with DIN 35 x 7.5 mm rail	47.3 mm
Length	110 mm
Width (Thickness)	48 mm

### ORDERING INFORMATION

CAT. NO.	DESCRIPTION	STD. PACK
CBB150LS	150 sq.mm Feed through Slotted Bolt Type Terminal Block in Grey colour	10
CBB150LSBK	150 sq.mm Feed through Slotted Bolt Type Terminal Block in Black colour	10
CBB150LSBR	150 sq.mm Feed through Slotted Bolt Type Terminal Block in Brown colour	10
CBB150LSBU	150 sq.mm Feed through Slotted Bolt Type Terminal Block in Blue colour	10
CBB150LSGN	150 sq.mm Feed through Slotted Bolt Type Terminal Block in Green colour	10
CBB150LSO	150 sq.mm Feed through Slotted Bolt Type Terminal Block in Orange colour	10
CBB150LSR	150 sq.mm Feed through Slotted Bolt Type Terminal Block in Red colour	10
CBB150LSW	150 sq.mm Feed through Slotted Bolt Type Terminal Block in White colour	10

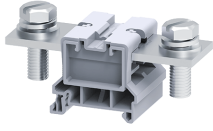
### ORDERING INFORMATION

CAT. NO.	DESCRIPTION	STD. PACK
CBB150LSY	150 sq.mm Feed through Slotted Bolt Type Terminal Block in Yellow colour	10

### ACCESSORIES

IMAGES	CAT. NO.	DESCRIPTION	STD. PACK
	CA701-1M	Din 35 Rail unslotted 1 meter	50
	CA701-2M	Din 35 Rail unslotted 2 meter	50
	CA701-2M-S	Din 35 Rail slotted 2 meter	50
	CA701-1M-S	Din 35 Rail slotted 1 meter	50
	CA701-15-1M	Din 35 Rail 15 deep unslotted 1 meter	50
	CA701-15-1M-S	Din 35 Rail 15 deep slotted 1 meter	50
	CA701-15-2M	Din 35 Rail 15 deep unslotted 2 meter	50
	CA701-15-2M-S	Din 35 Rail 15 deep slotted 2 meter	50
	CA202	End Clamp in Polyamide suitable for Din 35 / Din 35-15 Rails	25
	CA702	End Clamp in Polyamide 66 suitable for Din 32 / Din 35 / Din 35-15 Rails	50
	CA802	End Clamp in Polyamide suitable for Din 35 / Din 35-15 Rails	50
	PPCBB1	Partition Plate in Grey colour	50
	CA794/2	Permanent Shorting Link for 2 way shorting	10
	CA794/3	Permanent Shorting Link for 3 way shorting	10
	CA509/K16	Marking Tag Blank suitable for CTS35UNA / CGT35U Terminal Blocks	100
	CBBPC2/100	Protective cover is available in 100 mm Length	10
	CBBPC2/160	Protective cover is available in 160 mm Length	10
	CBBPC2/200	Protective cover is available in 200 mm Length	10
	CBBPC2/250	Protective cover is available in 250 mm Length	10
	MC16	MARKER CARD 16MM PITCH WITH 24 TAGS	10

CBB150LS



**connectwell**  
THE RIGHT CONNECTION

**APPROVALS**



**NOTES**

The Rated current is with the use of copper (Cu) conductor/Wire

**RATINGS AS PER STANDARDS**

STANDARDS	UL 1059	CSA C.22.2 No:158	IEC/EN60947-7-1
Approvals	UL	CSA	CE
Conductor Cross Section Stranded min.	8 AWG	8 AWG	16 mm <sup>2</sup>
Conductor Cross Section Stranded max.	300 AWG	300 AWG	150 mm <sup>2</sup>
Rated Voltage	600 V	600 V	1000 V
Rated Current	285 A	285 A	309 A
Tightening Torque	127 lb-in	127 lb-in	14 Nm