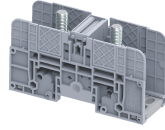


PTB120/150



connectwell
THE RIGHT CONNECTION

150 sq.mm Stud Type Power Terminal Blocks

PTB series Terminal Blocks are preferred for application using wires of large cross section. The Wire is crimped to a ring / fork lug and is screwed on to the flat current bar of the Terminal Block. Specially designed Mounting Feet hold the Terminal Block rigidly on to the Mounting Rail. Two Lugs of the rated cross section can be connected to the Terminal Block, without sacrificing the safety of the Terminal Block. In PTB35SH, PTB70SH, etc Terminal Blocks a hinged protective cover makes the Terminal Block shock proof (finger safe) and has marker recess to accept marking tag.

TECHNICAL DATA

| | |
|------------------------|-----------------------|
| Rated Voltage | 1000 V |
| Rated Current | 310 A |
| Tightening Torque | 10 Nm |
| Housing Material | Polymide |
| Standard Colour | Grey |
| Product Function | Power Terminal Block |
| Wire Entry Orientation | Side Entry |
| Mounting Possibility | DIN 35/DIN 35-15 Rail |
| Stud Size | M10 |
| Operated by | Nut Driver |
| Rated Surge Voltage | 8 KV |
| Pollution Degree | 3 |

CONNECTION DATA

| | |
|---------------------------------------|---------------------|
| Conductor Cross Section Stranded min. | 6 mm ² |
| Conductor Cross Section Stranded max. | 150 mm ² |
| Conductor Cross Section AWG/Kcmil min | 10 AWG |
| Conductor Cross Section AWG/Kcmil max | 350 kcmil |
| Stripping Length | mm |

DIMENSIONS

| | |
|----------------------------------|---------|
| Height | 72 mm |
| Height with DIN 35 x 15 mm rail | 79.8 mm |
| Height with DIN 35 x 7.5 mm rail | 72.3 mm |
| Length | 124 mm |
| Width (Thickness) | 42 mm |

ORDERING INFORMATION

| CAT. NO. | DESCRIPTION | STD. PACK |
|------------|---|-----------|
| PTB120/150 | 150 sq.mm Bolt Type Power Terminal Block in Grey colour | 5 |

ACCESSORIES

| IMAGES | CAT. NO. | DESCRIPTION | STD. PACK |
|--------|------------|-------------------------------|-----------|
| | CA701-1M | Din 35 Rail unslotted 1 meter | 50 |
| | CA701-2M | Din 35 Rail unslotted 2 meter | 50 |
| | CA701-2M-S | Din 35 Rail slotted 2 meter | 50 |
| | CA701-1M-S | Din 35 Rail slotted 1 meter | 50 |

ACCESSORIES

| IMAGES | CAT. NO. | DESCRIPTION | STD. PACK |
|--------|---------------|--|-----------|
| | CA701-15-1M | Din 35 Rail 15 deep unslotted 1 meter | 50 |
| | CA701-15-1M-S | Din 35 Rail 15 deep slotted 1 meter | 50 |
| | CA701-15-2M | Din 35 Rail 15 deep unslotted 2 meter | 50 |
| | CA701-15-2M-S | Din 35 Rail 15 deep slotted 2 meter | 50 |
| | CA102 | End Clamp in Polyamide suitable for Din32 / Din35 / Din35-15 Rails | 50 |
| | CA202 | End Clamp in Polyamide suitable for Din 35 / Din 35-15 Rails | 25 |
| | CA509/K16 | Marking Tag Blank suitable for CTS35UNA / CGT35U Terminal Blocks | 100 |
| | CA703/12 | Permanent Shorting Links for 2 way shorting. | 10 |
| | CA704/12 | Permanent Shorting Links for 3 way shorting. | 10 |
| | MC16 | MARKER CARD 16MM PITCH WITH 24 TAGS | 10 |

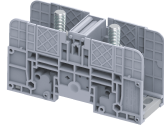
APPROVALS



NOTES

The Rated current is with the use of copper (Cu) conductor/Wire

PTB120/150



connectwell
THE RIGHT CONNECTION

RATINGS AS PER STANDARDS

| STANDARDS | UL 1059 | IEC/EN60947-7-1 |
|---------------------------------------|----------|---------------------|
| Conductor Cross Section Stranded min. | 10 AWG | 6 mm ² |
| Conductor Cross Section Stranded max. | 300 AWG | 150 mm ² |
| Rated Voltage | 1000 V | 1000VAC/1500VDC V |
| Rated Current | 310 A | 309 A |
| Tightening Torque | 87 lb-in | 10 Nm |