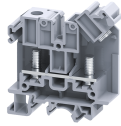


STH6



connectwell
THE RIGHT CONNECTION

35 sq. mm Stud Type Terminal Block - with captive nuts.

These Terminal Blocks are preferred for applications where the connections are subjected to severe vibrations. The wire is crimped to ring /fork type Lug (Ferrule) and is screwed on to flat current bar on the Terminal Block. The fastening nut always remains captive in the hinged plastic carrier. The Hinged Carrier should be lifted to insert the lugs and then snapped back into position. The nut can then be fastened to complete the connection. By the virtue of the hinged design the Terminal Blocks apart from shrouding the live parts, providing IP20 protection, saves considerable time in wiring.

TECHNICAL DATA

Rated Voltage	1000 V
Rated Current	125 A
Tightening Torque	3 Nm
Housing Material	Polymide
Product Function	Feed Through
Wire Entry Orientation	Side entry
Mounting Possibility	DIN 32/DIN 35/DIN 35-15 Rail
Screw Size	M6
Stud Size	M6
Operated by	Screw Driver
Rated Surge Voltage	8 KV
Pollution Degree	3

CONNECTION DATA

Conductor Cross Section Stranded min.	1.5 mm ²
Conductor Cross Section Stranded max.	35 mm ²
Conductor Cross Section AWG/Kcmil min	22 AWG
Conductor Cross Section AWG/Kcmil max	2 AWG
Stripping Length	mm

DIMENSIONS

Height with DIN 32 rail	68 mm
Height with DIN 35 x 15 mm rail	70.6 mm
Height with DIN 35 x 7.5 mm rail	63.1 mm
Length	63.9 mm
Width (Thickness)	18 mm

ORDERING INFORMATION

CAT. NO.	DESCRIPTION	STD. PACK
STH6	35 Sq.mm M6 captive nut Type Terminal Block in Grey Colour	50
STH6BK	35 Sq.mm M6 captive nut Type Terminal Block in Black Colour	50
STH6BU	35 Sq.mm M6 captive nut Type Terminal Block in Blue Colour	50
STH6GN	35 Sq.mm M6 captive nut Type Terminal Block in Green Colour	50
STH6R	35 Sq.mm M6 captive nut Type Terminal Block in Red Colour	50
STH6Y	35 Sq.mm M6 captive nut Type Terminal Block in Yellow Colour	50

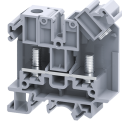
ACCESSORIES

IMAGES	CAT. NO.	DESCRIPTION	STD. PACK
	CA501-1M	Din 32 Rail unslotted 1 meter	50
	CA501-1M-S	Din 32 Rail slotted 1 meter	50
	CA501-2M	Din 32 Rail unslotted 2 meter	50
	CA501-2M-S	Din 32 Rail slotted 2 meter	50
	CA701-1M	Din 35 Rail unslotted 1 meter	50
	CA701-2M	Din 35 Rail unslotted 2 meter	50
	CA701-2M-S	Din 35 Rail slotted 2 meter	50
	CA701-1M-S	Din 35 Rail slotted 1 meter	50
	CA701-15-1M	Din 35 Rail 15 deep unslotted 1 meter	50
	CA701-15-1M-S	Din 35 Rail 15 deep slotted 1 meter	50
	CA701-15-2M	Din 35 Rail 15 deep unslotted 2 meter	50
	CA701-15-2M-S	Din 35 Rail 15 deep slotted 2 meter	50
	CA702	End Clamp in Polyamide 66 suitable for Din 32 / Din 35 / Din 35-15 Rails	50
	CA802	End Clamp in Polyamide suitable for Din 35 / Din 35-15 Rails	50
	EPSTH6	End Plate in Grey colour suitable for STH6 Terminal Block	50
	CA774/2	Pre Assembled Shorting Link Assemblies with 2 poles	100
	CA774/3	Pre Assembled Shorting Link Assemblies with 3 poles	100
	CA774/4	Pre Assembled Shorting Link Assemblies with 4 poles	100
	CA509/K16	Marking Tag Blank suitable for CTS35UNA / CGT35U Terminal Blocks	100
	SCS1/5.5	Electricians Screwdriver for slotted screws	10
	MC16	MARKER CARD 16MM PITCH WITH 24 TAGS	10

APPROVALS



STH6



connectwell
THE RIGHT CONNECTION

NOTES

The Rated current is with the use of copper (Cu) conductor/Wire

RATINGS AS PER STANDARDS

STANDARDS	UL 1059	IEC/EN60947-7-1	CSA C.22.2 No:158
Approvals	UL	CE	CSA
Conductor Cross Section Stranded min.	22 AWG	1.5 mm ²	22 AWG
Conductor Cross Section Stranded max.	2 AWG	35 mm ²	2 AWG
Rated Voltage	600 V	1000 V	600 V
Rated Current	115 A	125 A	115 A
Tightening Torque	25 lb-in	3 Nm	25 lb-in