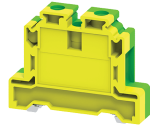


CGT16N



16 sq.mm Ground / Earth Terminal Blocks

These Terminal Blocks are used for Grounding / Earthing Wires. They are Green-Yellow colour coded as per industries standard. They have the same top profile as their respective feed through Terminal Blocks.

TECHNICAL DATA

Tightening Torque	1.2 Nm
Housing Material	Polymide
Standard Colour	Yellow - Green
Product Function	Earthing/Grounding
Wire Entry Orientation	Side Entry
Mounting Possibility	DIN 35/DIN 35-15 Rail
Screw Size	M4
Operated by	Screwdriver
Rated Surge Voltage	8 KV
Pollution Degree	3

CONNECTION DATA

Conductor Cross Section Stranded min.	0.2 mm ²
Conductor Cross Section Stranded max.	16 mm ²
Conductor Cross Section AWG/Kcmil min	20 AWG
Conductor Cross Section AWG/Kcmil max	4 AWG
Conductor Cross Section Stranded with Ferrule/Lug min	0.2 mm ²
Conductor Cross Section Stranded with Ferrule/Lug max	16 mm ²
2 Conductors with same Cross Section Stranded min	0.2 mm ²
2 Conductor with same Cross Section Stranded max	10 mm ²
2 Conductors with same Cross Section Stranded with TWIN Ferrule/Lug min	0.2 mm ²
2 Conductor with same Cross Section Stranded with TWIN Ferrule/Lug max	10 mm ²
Stripping Length	12 mm
Internal Cylindrical Gauge	A7

DIMENSIONS

Height with DIN 35 x 15 mm rail	56 mm
Height with DIN 35 x 7.5 mm rail	48.5 mm
Length	55 mm
Width (Thickness)	12 mm

ORDERING INFORMATION

CAT. NO.	DESCRIPTION	STD. PACK
CGT16N	16 sq.mm Ground/Earth terminal block in Green-Yellow colour.	50

ACCESSORIES

IMAGES	CAT. NO.	DESCRIPTION	STD. PACK
	CA701-1M	Din 35 Rail unslotted 1 meter	50
	CA701-2M	Din 35 Rail unslotted 2 meter	50
	CA701-2M-S	Din 35 Rail slotted 2 meter	50
	CA701-1M-S	Din 35 Rail slotted 1 meter	50
	CA701-15-1M	Din 35 Rail 15 deep unslotted 1 meter	50
	CA701-15-1M-S	Din 35 Rail 15 deep slotted 1 meter	50
	CA701-15-2M	Din 35 Rail 15 deep unslotted 2 meter	50
	CA701-15-2M-S	Din 35 Rail 15 deep slotted 2 meter	50
	CA509/K12	Marking Tag Blank suitable for CTS16U / CTS25UN / CGT16N / CDB25 / CMDB25 / CSC16T / CSCG16T / CY16 / CYG16 Terminal Blocks	100
	SCS1/5.5	Electricians Screwdriver for slotted screws	10
	MC12	MARKER CARD 12MM PITCH WITH 36 TAGS	10

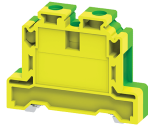
APPROVALS



NOTES

- 1) Polyamide6,6 flammability V0 grade as per UL 94
Operating Temperature - (-40 Deg C to +105 deg C)
- 2) The Rated current is with the use of copper (Cu) conductor/Wire

CGT16N



connectwell
THE RIGHT CONNECTION

RATINGS AS PER STANDARDS

STANDARDS	UL 1059	IEC/EN60947-7-2	CSA C.22.2 No:158
Approvals	UL	CE	CSA
Conductor Cross Section Stranded min.	20 AWG	0.2 mm ²	20 AWG
Conductor Cross Section Stranded max.	4 AWG	16 mm ²	4 AWG
Tightening Torque	14 lb-in	1.2 Nm	14 lb-in
STANDARDS	EN60079-7	EN60079-7	
Approvals	ATEX	ATEX-IECex	
Conductor Cross Section Stranded min.	2.5 mm ²	2.5 mm ²	
Conductor Cross Section Stranded max.	16 mm ²	16 mm ²	
Tightening Torque	2 Nm	2 Nm	
Operating Temperature Range	-40 to +85 °C		