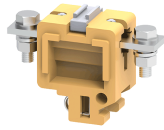


CTS35L



connectwell
THE RIGHT CONNECTION

50 sq.mm Bus Bar Type Terminal Blocks with locking nut.

These Terminal Blocks are preferred for applications using wires of a large cross section. The wire is crimped to a ring / fork type lug (ferrule) and is screwed on to the flat current bar on the Terminal Block. The range includes Terminal Blocks for wire sizes from 16 sq.mm to 120 sq.mm. CTS35LS Terminal Blocks have a threading in the current bar, eliminating the need of locking nuts.

Partition / Isolation Plate must be used with every Terminal Block. The Protective Cover is designed to be mounted on a specially designed slot in the Partition Plate.

TECHNICAL DATA

Rated Voltage	1000 V
Rated Current	150 A
Tightening Torque	3 Nm
Housing Material	Melamine
Product Function	Feed Through
Wire Entry Orientation	Side Entry
Mounting Possibility	DIN 32 Rail
Screw Size	M6
Operated by	Nut Driver
Rated Surge Voltage	8 KV
Pollution Degree	3

CONNECTION DATA

Conductor Cross Section Stranded min.	16 mm ²
Conductor Cross Section Stranded max.	50 mm ²
Conductor Cross Section AWG/Kcmil min	8 AWG
Conductor Cross Section AWG/Kcmil max	2 AWG
Conductor Cross Section Stranded with Ferrule/Lug min	16 mm ²
Conductor Cross Section Stranded with Ferrule/Lug max	50 mm ²
2 Conductors with same Cross Section Stranded min	16 mm ²
2 Conductor with same Cross Section Stranded max	50 mm ²
Stripping Length	12 mm

DIMENSIONS

Height with DIN 32 rail	52 mm
Length	75 mm
Width (Thickness)	28 mm

ORDERING INFORMATION

CAT. NO.	DESCRIPTION	STD. PACK
CTS35L	50 sq.mm Bus Bar Type Terminal Block in Khaki/Beige colour	10
CTS35LR	50 sq.mm Bus Bar Type Terminal Block in Red colour	10
CTS35LY	50 sq.mm Bus Bar Type Terminal Block in Yellow colour	10

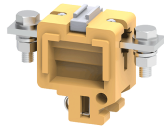
ORDERING INFORMATION

CAT. NO.	DESCRIPTION	STD. PACK
CTS35LBU	50 sq.mm Bus Bar Type Terminal Block in Blue colour	10
CTS35LBK	50 sq.mm Bus Bar Type Terminal Block in Black colour	10

ACCESSORIES

IMAGES	CAT. NO.	DESCRIPTION	STD. PACK
	CA501-1M	Din 32 Rail unslotted 1 meter	50
	CA501-1M-S	Din 32 Rail slotted 1 meter	50
	CA501-2M	Din 32 Rail unslotted 2 meter	50
	CA501-2M-S	Din 32 Rail slotted 2 meter	50
	CA102	End Clamp in Polyamide suitable for Din32 / Din35 / Din35-15 Rails	50
	CA502	End Clamp in Steel suitable for Din 32 Rail	50
	CA702	End Clamp in Polyamide 66 suitable for Din 32 / Din 35 / Din 35-15 Rails	50
	CTSEP4	Partition Plate in Khaki / Beige colour	50
	EP4P	Partition Plate in Polyamide 6.6 Grey colour	50
	CTSEP4LO	Locking Support for partition plate	10
	CA796/2	Permanent Shorting Link for 2 way shorting	10
	CA796/3	Permanent Shorting Link for 3 way shorting	10
	CA509/K2B4	Blank Marking Tag	100

CTS35L



connectwell
THE RIGHT CONNECTION

ACCESSORIES

IMAGES	CAT. NO.	DESCRIPTION	STD. PACK
	CTSPC3-1	90 mm Protective Cover	10
	CTSPC3-2	210 mm Protective Cover	10
	CTSPC2-1	100 mm Protective Cover	10
	CTSPC2-2	190 mm Protective Cover	10
	MC2B4	MARKER CARD 5MM PITCH WITH 72 TAGS	10

APPROVALS



NOTES

The Rated current is with the use of copper (Cu) conductor/Wire

RATINGS AS PER STANDARDS

STANDARDS	CSA C.22.2 No:158	IEC/EN60947-7-1
Approvals	CSA	CE
Conductor Cross Section Stranded min.	8 AWG	16 mm ²
Conductor Cross Section Stranded max.	2 AWG	50 mm ²
Rated Voltage	600 V	1000 V
Rated Current	145 A	150 A
Tightening Torque	27 lb-in	3 Nm