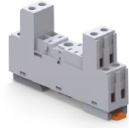


CRS2COP


connectwell
 THE RIGHT CONNECTION

Connectwell Relay Socket DPDT 10A

LED Module for Indication
 Easy to replace pluggable relays
 Variety of Voltages.

TECHNICAL DATA

Ambient Operating Temperature	-40 to +40 °C
Mounting Possibility	DIN 35/DIN 35-15 Rail
Housing Material	PA66 V0 Grade
Housing Colour	Grey
Rated Voltage	320 V
Rated Current/Channel	10 A

RELAY OUTPUT/CONTACT SPECIFICATIONS

Contact Type	2CO (DPDT)
--------------	------------

CONNECTION SPECIFICATIONS

Type of Connection	Screw Connection
Min. Wire Size	0.2 mm ²
Max. Wire Size	4 mm ²
Min. Wire Size(AWG)	24 AWG
Max. Wire Size(AWG)	10 AWG
Screw Size	M3
Wire Stripping Length	10 mm
Torque	0.5 Nm
Torque	4.5 lb-in

ORDERING INFORMATION

CAT. NO.	DESCRIPTION	NO. OF CHN.	DIM. DET.	STD. PACK
CRS2COP	Connectwell Relay Socket DPDT 10A	-	15X 43.5X76 (W X H X L)mm	10

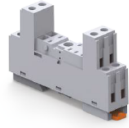
ACCESSORIES

IMAGES	CAT. NO.	DESCRIPTION	STD. PACK
	CA701-1M	Din 35 Rail unslotted 1 meter	50
	CA701-2M	Din 35 Rail unslotted 2 meter	50
	CA701-2M-S	Din 35 Rail slotted 2 meter	50
	CA701-1M-S	Din 35 Rail slotted 1 meter	50
	CA701-15-1M	Din 35 Rail 15 deep unslotted 1 meter	50
	CA701-15-1M-S	Din 35 Rail 15 deep slotted 1 meter	50
	CA701-15-2M	Din 35 Rail 15 deep unslotted 2 meter	50
	CA701-15-2M-S	Din 35 Rail 15 deep slotted 2 meter	50
	SCS0.5/3	Electricians Screwdriver for slotted screws	10

ACCESSORIES

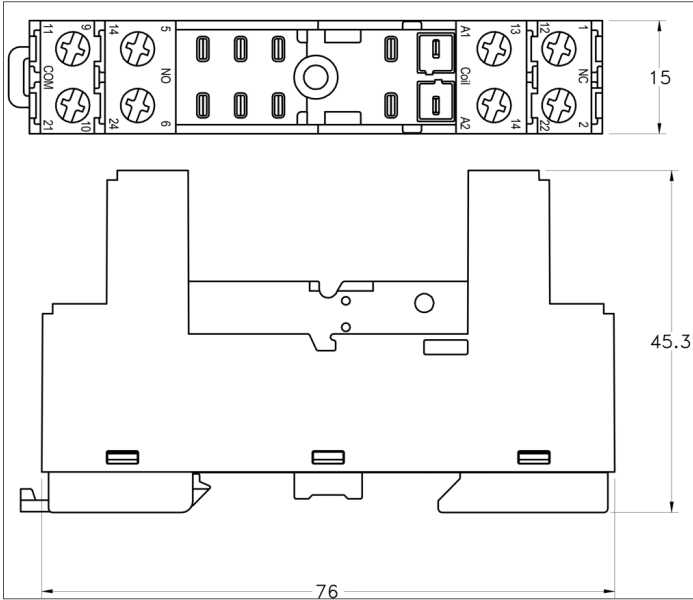
IMAGES	CAT. NO.	DESCRIPTION	STD. PACK
	MT-CRM2CO	Marker Tag for CRM Series	100
	CRB1	Retaining Bracket	1
	CRLD12-60V	12 to 60 VAC/VDC LED Module with Freewheeling diode for DC voltages.	10
	CRLD110-230V	110 to 230 VAC/VDC LED Module with Freewheeling diode for DC voltages.	10
	CRL12-60V	12 to 60 VAC/VDC LED Module for AC voltages.	10
	CRL110-230V	110 to 230 VAC/VDC LED Module for AC voltages.	10

CRS2COP

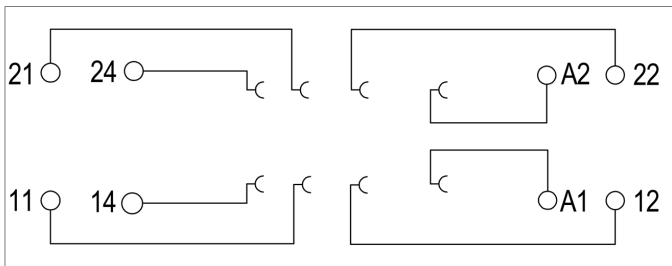


connectwell
THE RIGHT CONNECTION

PRODUCT DRAWING



CIRCUIT DIAGRAM



NOTES

Pollution Degree - 2
Ingress Protection - IP20
Height With DIN35/7.5 - 47.5 mm
Height with DIN35/15 - 55 mm
Weight - 33.5 gm