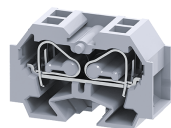


CM4S2



**connectwell**  
THE RIGHT CONNECTION

4 sq. mm spring clamp Panel Mount Terminal Blocks.

A perfect solution for extremely compact wiring applications, these terminal block are modular and can be stacked to form multi-pole terminal block assemblies. CM series terminal Block have a side sere entry configuration.

**TECHNICAL DATA**

Rated Voltage	630 V
Rated Current	32 A
Housing Material	Polymide
Product Function	Feed Through
Wire Entry Orientation	Side
Mounting Possibility	Free Floating / Surface / Panel
Operated by	Screw Driver
Rated Surge Voltage	6 KV
Pollution Degree	3

**CONNECTION DATA**

Conductor Cross Section Stranded min.	0.2 mm <sup>2</sup>
Conductor Cross Section Stranded max.	4 mm <sup>2</sup>
Conductor Cross Section AWG/Kcmil min	24 AWG
Conductor Cross Section AWG/Kcmil max	10 AWG
Conductor Cross Section Stranded with Ferrule/Lug min	0.2 mm <sup>2</sup>
Conductor Cross Section Stranded with Ferrule/Lug max	1.5 mm <sup>2</sup>
2 Conductors with same Cross Section Stranded min	0.2 mm <sup>2</sup>
2 Conductor with same Cross Section Stranded max	1.5 mm <sup>2</sup>
Conductor Cross Section Solid min	0.2 mm <sup>2</sup>
Conductor Cross Section Solid max	4 mm <sup>2</sup>
Stripping Length	10 mm

**DIMENSIONS**

Height	23 mm
Length	33.7 mm
Width (Thickness)	12 mm




**ORDERING INFORMATION**

CAT. NO.	DESCRIPTION	STD. PACK
CM4S2	4 sqmm Panel Mount Spring ClampTerminal Block in Grey colour.	100
CM4S2BK	4 sqmm Panel Mount Spring ClampTerminal Block in Black colour.	100
CM4S2BU	4 sqmm Panel Mount Spring ClampTerminal Block in Blue colour.	100
CM4S2GN	4 sqmm Panel Mount Spring ClampTerminal Block in Green colour.	100
CM4S2R	4 sqmm Panel Mount Spring ClampTerminal Block in Red colour.	100

**ORDERING INFORMATION**

CAT. NO.	DESCRIPTION	STD. PACK
CM4S2Y	4 sqmm Panel Mount Spring ClampTerminal Block in Yellow colour.	100
CM4S2YG	4 sqmm Panel Mount Spring ClampTerminal Block in Yellow-Green colour.	100

**ACCESSORIES**

IMAGES	CAT. NO.	DESCRIPTION	STD. PACK
	SCS0.5/3	Electricians Screwdriver for slotted screws	10
	EPCM4S	End Plate in Grey Colour	50
	CA509/K12	Marking Tag Blank suitable for CTS16U / CTS25UN / CGT16N / CDB25 / CMDDB25 / CSC16T / CSCG16T / CY16 / CYG16 Terminal Blocks	100

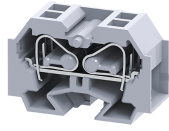
**APPROVALS**



**NOTES**

The Rated current is with the use of copper (Cu) conductor/Wire

CM4S2



**connectwell**  
THE RIGHT CONNECTION

RATINGS AS PER STANDARDS

STANDARDS	UL 1059	CSA C. 22. 2 No:158	IEC/EN60947-7-1
Approvals	UL	CSA	CE
Conductor Cross Section Stranded min.	24 AWG	24 AWG	0.2 mm <sup>2</sup>
Conductor Cross Section Stranded max.	10 AWG	10 AWG	4 mm <sup>2</sup>
Rated Voltage	300 V	300 V	630 V
Rated Current	26 A	26 A	32 A